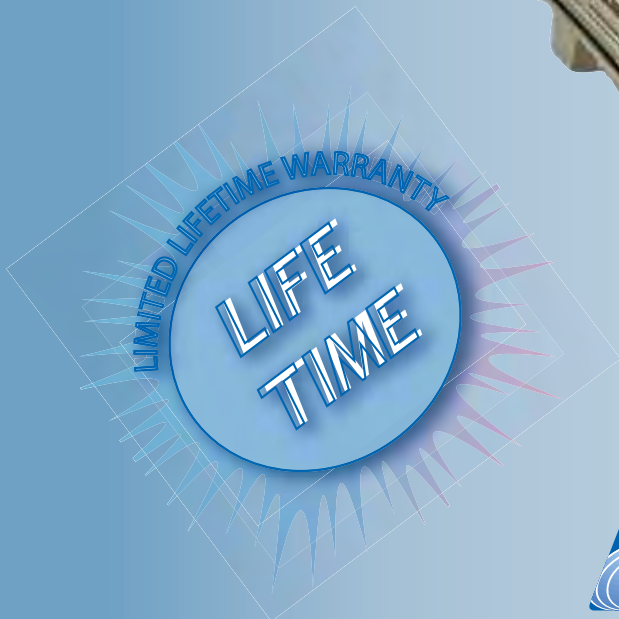


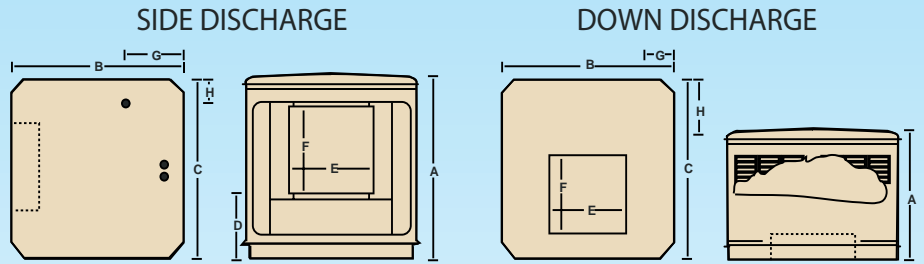
THE Preferred EVAPORATIVE COOLER.



THE Preferred EVAPORATIVE COOLER.

Specifications

LM = LESS MOTOR
See Replacement Parts chart below for correct motor size and part number.



Side-Draft General Specifications

MODEL NO.	CABINET DIMENENSIONS (A x B x C & D)	DUCT OPENING (E x F)	DRAIN OUTLET (G x H)	PLATFORM SIZE/STAND	WATER CAP.	WEIGHT (LBS) SHIP. OPER.	
TS451-LM	34 7/16 x 37 1/2 x 37 1/2 & 12"	17 3/4 x 17 3/4"	12 x 6"	34" sq.	5 gal.	160	192
TS571-LM	38 3/4 x 45 x 45 & 13 1/2"	19 3/4 x 19 3/4"	5 5/8 x 14 5/8"	43" sq.	10 gal.	212	280

Performance Data

Cooling requirements can vary depending on size, design, insulation and location of home.

MODEL NO.	PAD SIZE (HEIGHT X WIDTH)	MOTOR SPECS			RATING IND. STD.	CFM INCHES STATIC PRESSURE					AREA COOLING CAP. (SQ. FT.)
		H.P.	VOLTS	SPEED		0.1	0.2	0.3	0.4	0.5	
TS451-LM	26 x 33"	1/2	115	2	4500	3230	3000	2775	2140	1475	700 to 1300
TS571-LM	30 x 40"	3/4	115	2	6500	4600	4320	4060	3810	3630	1400 to 1700

Down-Draft General Specifications

Use only a flanged roof jack to install down discharge cooler. Leg kit included on all down discharge models.

MODEL NO.	CABINET DIMENENSIONS (A x B x C & D)	DUCT OPENING (E x F)	DRAIN OUTLET (G x H)	WATER CAP.	WEIGHT (LB.S) SHIP. OPER.	
TC451-LM	28 1/8 x 40 3/4 x 40 3/4 & 4 1/2"	17 3/4 x 17 3/4"	6 x 13"	10 gal.	167	237
TC571-LM	33 1/2 x 45 x 45 & 4 1/2"	19 3/4 x 19 3/4"	6 x 11"	12 gal.	205	288

Performance Data

Cooling requirements can vary depending on size, design, insulation and location of home.

MODEL NO.	PAD SIZE (HEIGHT X WIDTH)	MOTOR SPECS			RATING IND. STD.	CFM INCHES STATIC PRESSURE					AREA COOLING CAP. (SQ. FT.)
		H.P.	VOLTS	SPEED		0.1	0.2	0.3	0.4	0.5	
TC451-LM	20 x 36"	1/2	115	1 or 2	4500	3430	3230	3064	2998	2010	700 to 1300
TC571-LM	24 x 40"	3/4	115	1 or 2	6500	4780	4530	4280	4020	3780	1400 to 1700

Cooler Sizing Guide Use this chart to approximate your cooler size

Building Sq. Ft.	Ceiling Height	
	8 ft.	10 ft.
700 - 1300	4500 CFM TC/TS 451	4500 CFM TC/TS 451
1400 - 1700	6500 CFM TC/TS 571	6500 CFM TC/TS 571

CFM is determined by multiplying the square footage of the home times four: example 1200 sq. ft. - 4800 CFM. Always round up to the next highest CFM. Homes larger than 2000 sq. ft. may require 2 units.

CFM

Replacement Parts Use this chart to find the correct parts

Models	TC451	PART#	TC571	PART#	TS451	PART#	TS571	PART#
Pad size	20 x 36	46HPS	24x40	56HPS	26 x 34	41HPS	30 x 40	51HPS
Belt Size	55"	582030	62"	582047	60"	582085	65"	582001
Pump	5000 CFM	70725	7000 CFM	70726	5000 CFM	70725	7000 CFM	70726
Motor	1/2 HP	50310	3/4 HP	30491	1/2 HP	50310	3/4 HP	30491
Discharge Opening	17 3/4"	N/A	19 3/4"	N/A	17 3/4"	N/A	19 3/4"	N/A

